



OKADA RECONDITIONED & DEMONSTRATED EQUIPMENT

Revised May 17, 2018

TO: ALL BARGAIN HUNTERS!! The following used or demonstrated attachments are available for resale. They will be cleaned or blasted, painted, and equipped as listed:

Carrier Weight Class 2.2 – 4.4 US Tons (4,400 - 8,800 lbs.)

Model TOP35/B-R (500 ft. lb. class) Breaker c/w new seals & bushings (if needed) & new working tool;
Plus a 4 mo. warranty!

- Ref. S/N varies (several available); FOB Medina, OH & Clackamas OR- CHECK AVAILABILTY



"A" Configuration

"B" Configuration

"C" Configuration

"D" Configuration

(Take an add'l 5% off Net on 2 or more!)

Four Mounting Configurations:

A



**Pin-on
(U4)**

B



**Bolt-on
(UMB)**

C



**Skid Steer
(SS)**

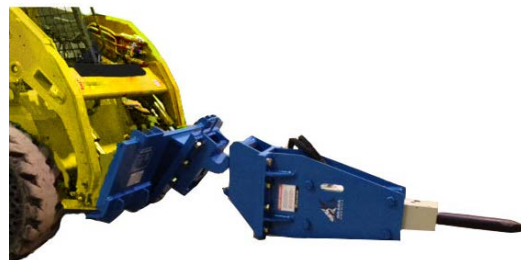
D



**Combination
Mini-Exc. & SS**



**Skid Steer
(SS)**



**Combination
Mini-Exc. & SS**



Carrier Weight Class 1.1 – 2.5 US Tons (2,200 – 5,000 lbs.)

Model TOP21H-R (225 ft. lb. class) Breaker c/w new seals, bushing & working tool; UMB of your choice (Add \$250 *net* for *new* dingo backing mtg. plate), 4 mo. warranty

- Ref. S/N 08V539R; FOB Medina, OH- CHECK AVAILABILTY
- Ref. S/N 08V608R; FOB Medina, OH- CHECK AVAILABILTY



Carrier Weight Class 2.2 – 4.4 US Tons (4,400 - 8,800 lbs.)

Model TOP35/B-R (500 ft. lb. class) Breaker - (See Page 1)



Carrier Weight Class 4.4 – 8.8 Tons (8,800 – 17,600 lbs.)

Model TOP45B-R (750 ft. lb. class) Hammer c/w with VCB Bracket; new seals; bushings; piston (if required) & working tool; UMB of your choice; 4-mo. warranty

- Ref. S/N varies (several available); FOB Medina, OH - CHECK AVAILABILTY



Carrier Weight Class 5-9 US Tons (10,000 - 18,000 lbs.)

Model OKB304B-R (1,000 ft. lb. class) Breaker c/w new seals & bushings; new piston (if needed); new working tool; the UMB of your choice; 4-month warranty

- Ref. S/N varies (several available); FOB Medina, OH & Clackamas OR- CHECK AVAILABILTY



Carrier Weight Class 6-10 US Tons (12,000 - 20,000 lbs.)

Model TOP60B-R (1,250 ft. lb. class) Breaker c/w new seals & bushings; new working tool; the UMB of your choice; 4-month warranty

- Ref. S/N 3708R; FOB Medina, OH – CHECK AVAILABILITY
- Ref. S/N 3968R; FOB Medina, OH – CHECK AVAILABILITY
- Ref. S/N 4027R; FOB Medina, OH – CHECK AVAILABILITY



Carrier Weight Class 11-21 US Tons (22,000 - 24,000 lbs.)

Model TOP100A-R (2,500 ft. lb. class) Breaker c/w new seals & bushings; new working tool; the UMB of your choice; 6-month warranty

- Ref. S/N 4013R; FOB Medina, OH – CHECK AVAILABILITY

G



Carrier Weight Class 18-24 US Tons (36,000 - 48,000 lbs.)

Model TOP200-R (3,500 ft. lb. class) Breaker c/w new seals & bushings;
new piston (if needed); new working tool; the UMB of your choice; 4-month warranty

- Ref. S/N 2795R (V8Z); FOB Medina, OH – CHECK AVAILABILITY

H



Carrier Weight Class 31-47 US Tons (62,000 - 94,000 lbs.)

Model TOP300-R (7,500 ft. lb. class) Breaker c/w new seals & bushings;
new piston; new working tool; the UMB of your choice; 4-month warranty

- Ref. S/N 1080R (V8Z); FOB Medina, OH – CHECK AVAILABILITY

I



Carrier Weight Class 37 – 53 US Tons (74,000 - 106,000 lbs.)

Model TOP400-R (10,000 ft. lb. class) Hammer c/w new bushings, seals, piston (if required) &
working tool; UMB of your choice; 6-month. Warranty

- Ref. S/N 2043R; FOB Cleburne, TX – CHECK AVAILABILITY
- Ref. S/N 2045R; FOB Cleburne, TX – CHECK AVAILABILITY
- Ref. S/N 2047R; FOB Cleburne, TX – CHECK AVAILABILITY
- Ref. S/N 2048R; FOB Cleburne, TX – CHECK AVAILABILITY
- Ref. S/N 2060R; FOB Cleburne, TX – CHECK AVAILABILITY
- Ref. S/N 2074R; FOB Medina, OH – READY TO SHIP
- Ref. S/N 2120R; FOB Cleburne, TX – CHECK AVAILABILITY
- Ref. S/N 2154R; FOB Cleburne, TX – CHECK AVAILABILITY
- Ref. S/N 2157R; FOB Cleburne, TX – CHECK AVAILABILITY
- Ref. S/N 2167R; FOB Medina, OH – CHECK AVAILABILITY

J



Carrier Weight Class 50+ US Tons (106,000 lbs. & Up)

• **Model OKB330-R (15,000 ft. lb. class) Hammer** c/w new bushings, seals, piston (if required) &
working tool; UMB of your choice; 6-month. Warranty

- Ref. S/N 2005R; FOB Medina, OH – CHECK AVAILABILITY

K Carrier Weight Class 30-50 US Ton (60,000-100,000 lbs.)

- **Model CUT100HR-R Cutter-Crusher*** c/w Hydraulic Rotation (HR: dedicated rotation circuit required); Rental unit with minimal hours; c/w Universal upper & mounting pin kit of your choice; excellent cutting blades; 8-month warranty
- Ref. S/N CR1E047; FOB Clackamas, OR – CHECK AVAILABILITY



L Carrier Weight Class 13-29 US Ton (26,000 - 58,000 lbs.)

- **Model OMC160FIX-R Stump Smasher;** Rental unit c/w minimal hours; c/w Universal upper [13.8" mtg., width] & mounting pin kit of your choice; 8-mo. warranty
- Ref. S/N MC7A037; FOB Medina, OH – CHECK AVAILABILITY



M Carrier Weight Class 3.3 -5.5 US Ton (6,600 - 11,000 lbs.)

- **New Model ASG-30-R Rotating Grapple** c/w Universal Pin-on [w/ 7.1" mtg. width; 9.8" Pin on-center; 2.36" (60 mm) pin bore] Pin & bushing kit of choice included. Full 12-month warranty
- Ref. S/N ASG3A098; FOB Clackamas, OR – READY TO GO



N Carrier Weight Class 31 -47 US Ton (62,000 - 94,000 lbs.)

- **New Model OSG-120-R Rotating Grapple** c/w UMB of your choice; 8-month warranty
- Ref. S/N SR12A19; FOB Cleburne, TX – READY TO GO

Low Hours Units & New Unit SPECIALS!!

Revised May 17, 2018

O Carrier Weight Class 2.2 – 4.4 US Tons (4,400 – 8,800 lbs.)

- **NEW TOP35 (500 ft. lb. class) Breaker;** Several available UMB of your choice; Full 24-month warranty





***RE-RENT PRICING & TERMS:**

- *Contact your Regional Manager for Rental Rates*

Notes

- *Rates are based on a 4-week month; (160 hours max. per month)*
- *Minimum Rental Terms: 2 months*
- *Maximum Rental Terms: 6 months*
- *90% of paid rental shall apply to original net price if purchased.*
- *Seasonal (Skip Payment) / Rental-Split Program available. Ask for details.*
- *Dealer/Customer is responsible for all freight cost; FOB Okada shipping location.*
- *Each hammer shall be shipped with (1) working tool. The cost for an additional tool or tools, blades, crushing teeth, etc. shall be the responsibility of the renter.*
- *The rental transaction and the rate are subject to prior approval and are at the discretion of Okada America Inc.*

All of the above units are available on a first come, first served basis. All hammers and crushers are standard equipped with a set of hydraulic hoses with threaded JIC fittings. Photos of completed units can be made available upon request. Checks or PO's will have priority over verbal promises or holds. Call your Regional Manager if you need photos or additional information.